

Line Scan Hyperspectral Camera (220nm-4.2um)



Blue Eye
UV (220 - 380 nm)



Green Eye
VIS-NIR (400 - 1000 nm)



Orange Eye
VIS-NIR (580 - 1000 nm)



Red Eye
NIR (950 - 1700 nm)



Black Eye
MIR (2900 - 4200 nm)

Snap Shot Hyperspectral



Ultris x20 Standard

- 380-1000nm
- 410*410 pixel



Ultris x20 PLUS High Resolution

- 380-1000nm
- 1880*1880 pixel



ULTRIS 5 Palm Size

- 480 - 850 nm
- 250 x 250 pixel



ULTRIS 5 (High Frame Rate)

- 480 - 850 nm (Modifiable)
- 250 x 250 pixel



Snapshot Hyperspectral Camera for Microscope

- 450 - 950 nm
- Spatial Resolution: 50 x 50 pixel



Multi-Spectral Camera (400-1000nm)



[Snapshot Multispectral Camera](#)



[Multispectral Drone Cameras](#)



[Multispectral Imaging Systems](#)



[Multispectral Camera for Microscope](#)

Types	Number of Band	Wavelength Choice(nm)	Band Width	Sensor format	Image Resolution	Accessories
Multispectral Camera	<8	474, 495, 526, 546, 578, 602, 621, 640 720, 760, 800, 840, 860, 900, 940, 980nm Customized Wavelength availabl	20 to 120nm	1-inch	<512*512	N.A
Multispectral Drone Cameras	<8		20 to 70nm	1-inch	<512*512	Drone Adatpor
Multispectral Imaging Systems	<8		20 to 70nm	1-inch	<2048 x 512	8 Channel LED
Multispectral Camera for Microscope	<4		20 to 70nm	1-inch	<5472 x 3648	Microscope

XUV/VUV/Extended/Near edge spectrometer



[XUV Spectrometers \(5-80nm\)](#)



[XUV Spectrometers \(30-250nm\)](#)



[VUV Spectrometers \(40-200nm\)](#)



[VUV Spectrometers \(80-300nm\)](#)



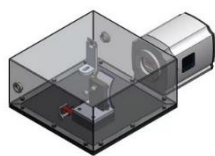
[XUV CCD Cameras \(1-100 nm\)](#)



[VUV CCD Cameras \(50-300 nm\)](#)



X-Ray Spectrometer



X-ray Spectrometer
(1- 20keV)



Extended X-ray Absorption
EXAFS (5-12keV)



Near Edge X-ray Absorption
NEXAFS (0.2-1.2keV)

Monochromators & Spectrographs



1/8m
Monochromator/S
pectrograph



1/2m&1/4m
Monochromator/
Spectrograph



Filter & Wheel



Monochromator
Accessories

Portable/Tabletop Spectrophotometer



Portable Spectrophotometer
(380-850nm)



Tabletop Spectrophotometer
(240-2150 nm)

Pyroelectric Infrared Detectors (2-12um)



Pyroelectric IR Single
Detectors (2-12um)



Pyroelectric IR Multi-Channel
Detectors (2-12um)



Pyroelectric IR Linear
Detector /LVF (2-12um)



Visible Single-Photon Detector (SPD)



Visible Single-Photon Detector
(Peak QE~500nm)



Visible Single-Photon Detector
(Peak QE ~ 800nm)



Visible Photon
Counter OEM



Silicon APD Detection Module



Ultra-fast Pulse Generator
for TCSPC

Infrared Single Photon Detector (SPD)



NIR Single Photon
Detector (900-1700)



NIR Single Photon
Detector Free-Runnin



NIR Single-Photon Detector
Low Dark Count



NIR Single Photon Detector SPAD Duel
Channel (900-1700nm)



Super Conducting Nanowire
System



Ultra-fast Pulse Generator
for TCSPC



Photodiode PD (200nm-12um)



Photomultiplier
200-1000nm



Photodiode
800-2550nm



Detection
Electronics



Cooled Photodiode
1-30um

Photodiode Power Sensors/ OD Filter



Free Beam HP



Free Beam LP



Fiber Base Detector



OD1 Filter



OD2 Filter

Power Meter Console



OPM 150

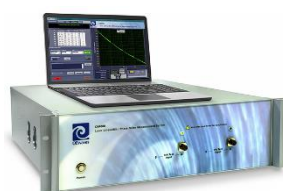


OPM200

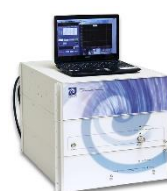


OPM500

Test Measurement System



Optical Test Measurement System



RF Test Measurement System



Integrating Spheres / Adaptor



Polymer Integrating Spheres with Detector (10-20mm)



High Power Polymer Integrating Spheres (20-100mm)



Gold Integrating Spheres 25/65/100mm



FC-Adapter



SMA-Adapter



Fibre Adapter 1.25 mm



Fibre Adapter LC

IR Beam Profiler (900-1700nm/ 2-16um/1-18Thz)



IR Beam Profiler (2-16um)



Terahertz Beam Profiler(1-18 THz)

Scanning Slit Beam Profiler (190-2500nm)



Scanning Slit Beam Profiler (190-2500nm)



Laser Diode LIV Testing Systems



Laser Diode Characterization System LIV100



Laser Diode Characterization System LIV120

Laser Doppler Vibrometer 0.1Hz to 5Mhz



Single-Point Laser Doppler Vibrometer

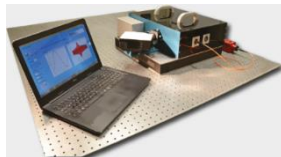


Multi-Point Laser Doppler Vibrometer

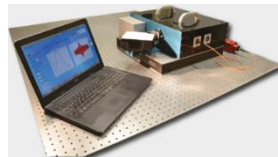


Long Distance Laser Doppler Vibrometer

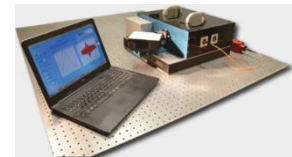
White Light Interferometer



White Light Interferometer (400-1060nm)

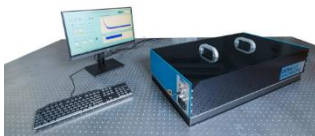


White Light Interferometer (250-1060nm)

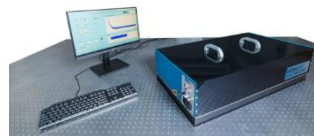


White Light Interferometer (900-2400nm)

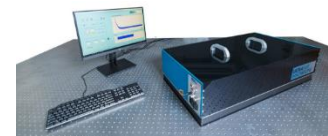
Optical Coating CRD Reflectometer



GLACIER (One Wavelength, 375 — 1550 nm Diode Laser Based)



GLACIER-123 (Three Wavelengths, 355, 532 and 1064 nm)



GLACIER-C (Three Wavelengths, 450 — 2000 nm Freely Selected)

