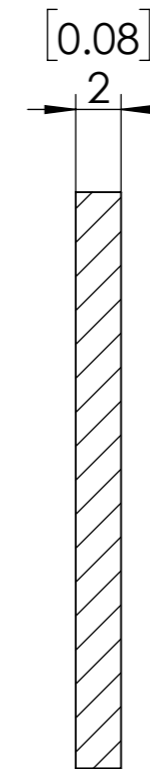
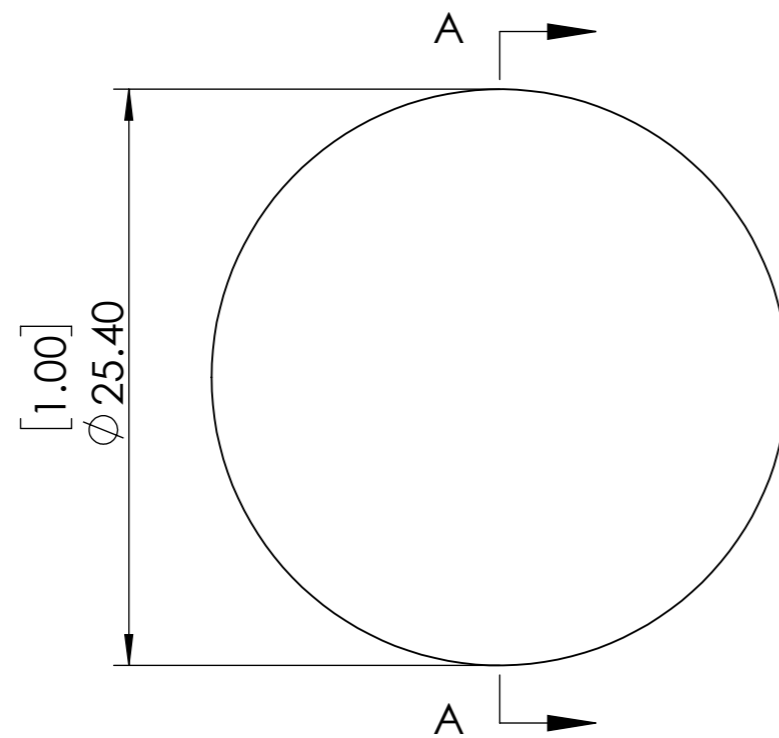
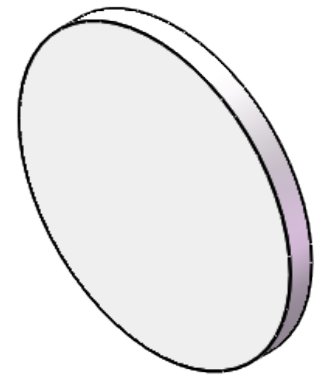


**FOR INFORMATION ONLY NOT FOR
MANUFACTURING PURPOSES**



SECTION A-A



1. CLEAR APERTURE: >90%
2. SURFACE FLATNESS: $<2\lambda@633\text{nm}$
3. SURFACE QUALITY: 60/40
4. PARALLELISM: <5 arcmin
5. BANDPASS REGION: 400-700 nm
6. OPTICAL DENSITY: 0.4
7. PEAK TRANSMITTANCE: 43.652 %
8. DIAMETER TOLERANCE: $+0/-0.2$ mm

SIMTRUM www.simtrum.com	
Title:	B270 Reflective Neutral Density Filter
Material:	BK7
Part No:	B270-RNDF-25.4-0.4