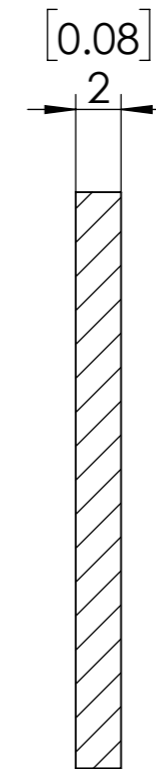
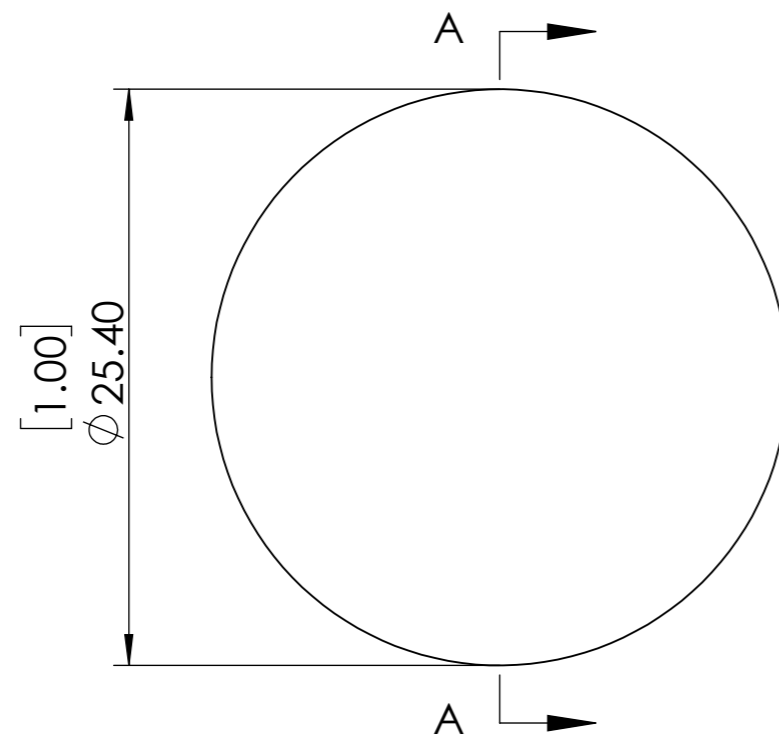
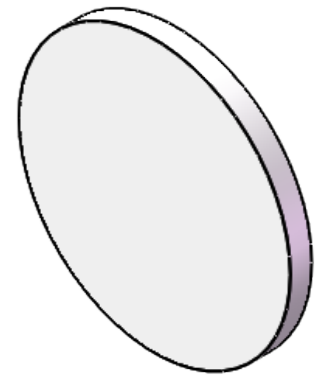


**FOR INFORMATION ONLY NOT FOR  
MANUFACTURING PURPOSES**



SECTION A-A



1. CLEAR APERTURE: >90%
2. SURFACE FLATNESS:  $<2\lambda@633\text{nm}$
3. SURFACE QUALITY: 60/40
4. PARALLELISM:  $<5$  arcmin
5. BANDPASS REGION: 400-700 nm
6. OPTICAL DENSITY: 0.5
7. PEAK TRANSMITTANCE: 35.481 %
8. DIAMETER TOLERANCE:  $+0/-0.2$  mm

<b>SIMTRUM</b> www.simtrum.com	
Title:	B270 Reflective Neutral Density Filter
Material:	BK7
Part No:	B270-RNDF-25.4-0.5