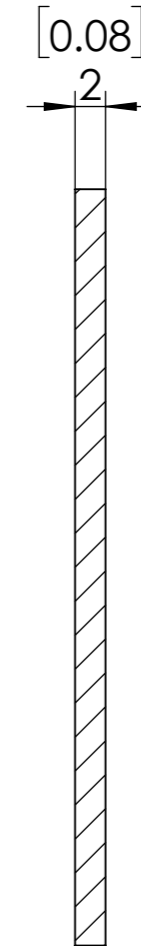
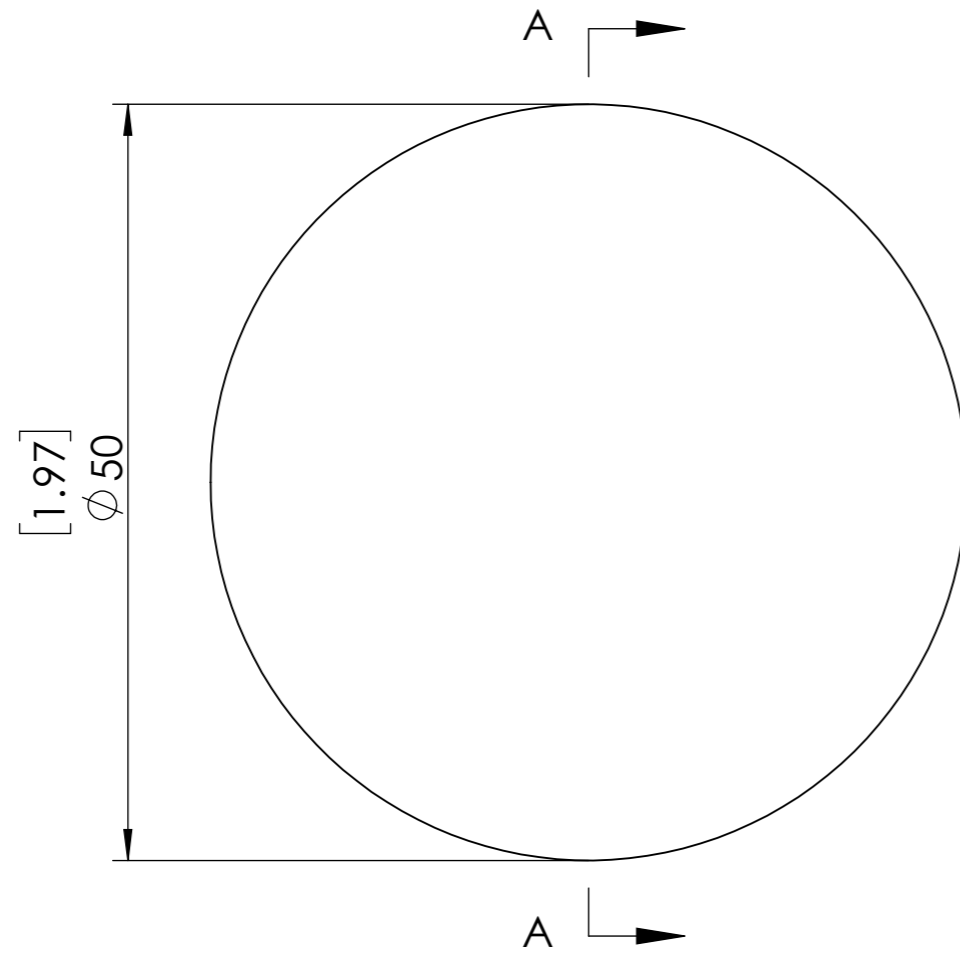
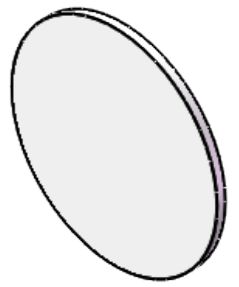


**FOR INFORMATION ONLY NOT FOR  
MANUFACTURING PURPOSES**



SECTION A-A

1. CLEAR APERTURE: >90%
2. SURFACE FLATNESS:  $<\lambda@633\text{nm}$
3. SURFACE QUALITY: 60/40
4. PARALLELISM:  $<3$  arcmin
5. BANDPASS REGION: 400-1200 nm
6. OPTICAL DENSITY: 0.045
7. PEAK TRANSMITTANCE: 90 %
8. DIAMETER TOLERANCE:  $+0/-0.2$  mm

<b>SIMTRUM</b> www.simtrum.com	
Title:	BK7 Reflective Neutral Density Filter
Material:	BK7
Part No:	BK7-RNDF-50-0.045