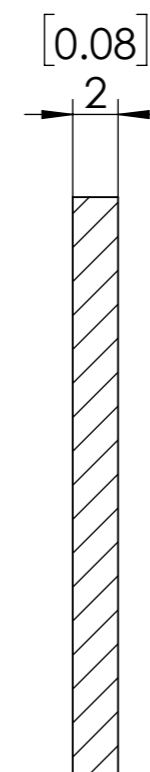
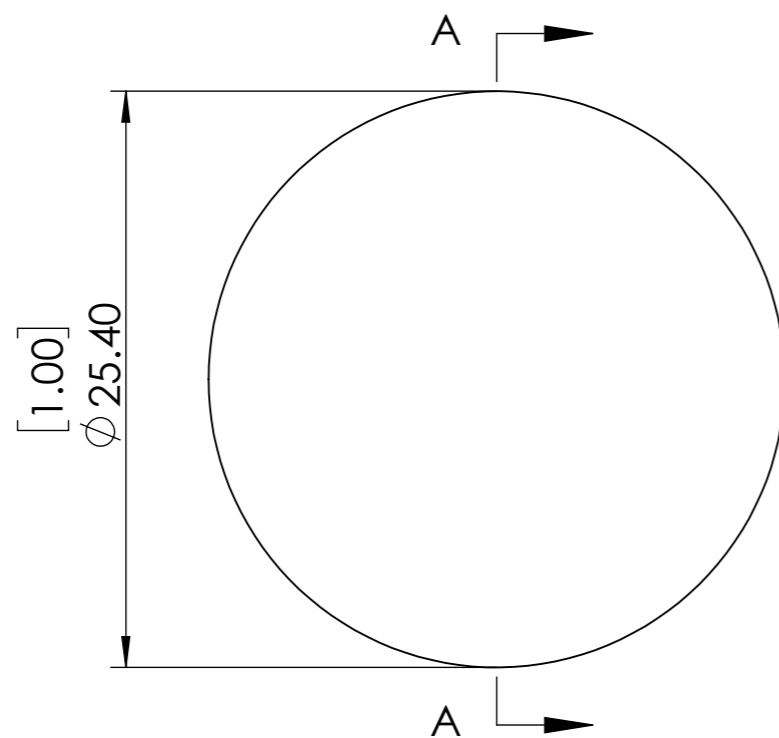
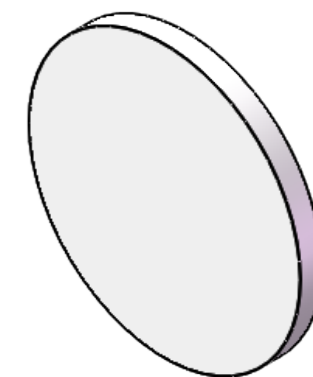


**FOR INFORMATION ONLY NOT FOR
MANUFACTURING PURPOSES**



SECTION A-A

1. CLEAR APERTURE: >90%
2. SURFACE FLATNESS: $<\lambda@633\text{nm}$
3. SURFACE QUALITY: 60/40
4. PARALLELISM: <3 arcmin
5. BANDPASS REGION: 400-1200 nm
6. OPTICAL DENSITY: 0.5
7. PEAK TRANSMITTANCE: 32 %
8. DIAMETER TOLERANCE: $+0/-0.2$ mm

SIMTRUM www.simtrum.com	
Title:	BK7 Reflective Neutral Density Filter
Material:	BK7
Part No:	BK7-RNDF-25.4-0.5