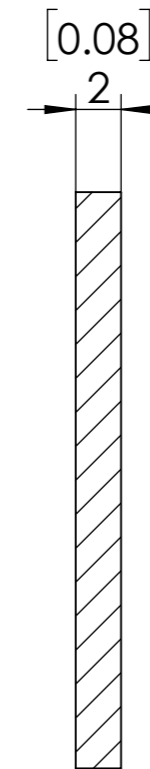
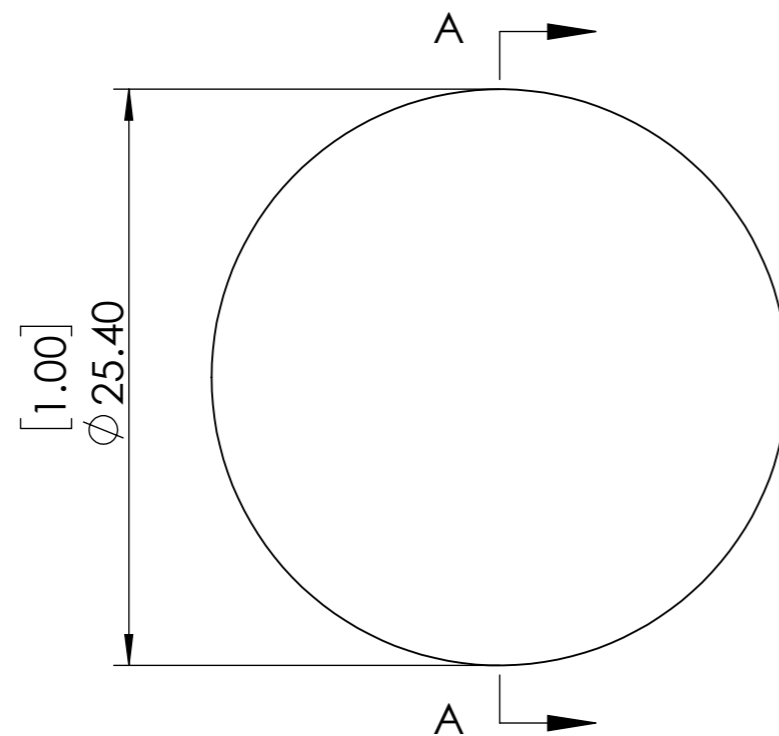
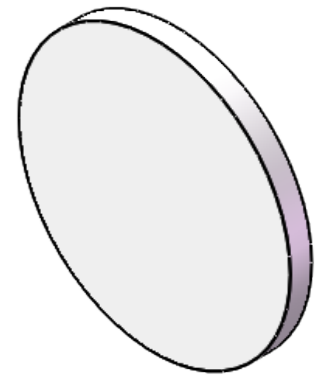


**FOR INFORMATION ONLY NOT FOR
MANUFACTURING PURPOSES**



SECTION A-A



- 1.CLEAR APERTURE: >90%
- 2.SURFACE FLATNESS: $<\lambda@633\text{nm}$
- 3.SURFACE QUALITY: 60/40
- 4.PARALLELISM: <3 arcmin
- 5.BANDPASS REGION: 400-1200 nm
- 6.OPTICAL DENSITY: 1.5
- 7.PEAK TRANSMITTANCE: 3.2 %
- 8.DIAMETER TOLERANCE: $+0/-0.2$ mm

SIMTRUM www.simtrum.com	
Title:	BK7 Reflective Neutral Density Filter
Material:	BK7
Part No:	BK7-RNDF-25.4-1.5