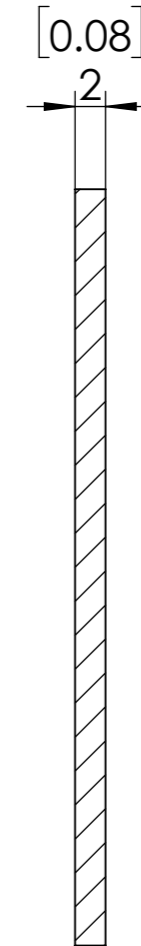
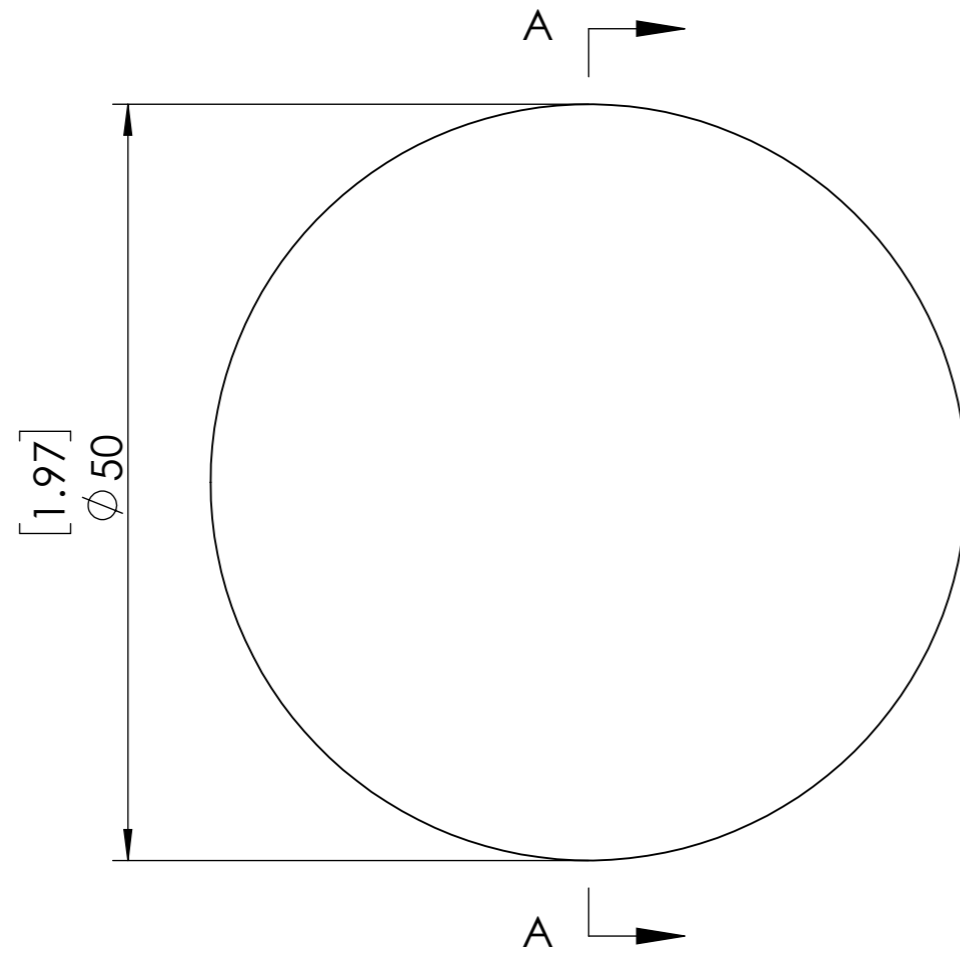
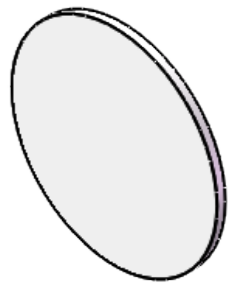


**FOR INFORMATION ONLY NOT FOR  
MANUFACTURING PURPOSES**



SECTION A-A

- 1.CLEAR APERTURE: >90%
- 2.SURFACE FLATNESS:  $<\lambda@633\text{nm}$
- 3.SURFACE QUALITY: 60/40
- 4.PARALLELISM:  $<3$  arcmin
- 5.BANDPASS REGION: 400-1200 nm
- 6.OPTICAL DENSITY: 2
- 7.PEAK TRANSMITTANCE: 1 %
- 8.DIAMETER TOLERANCE:  $+0/-0.2$  mm

|                                   |                                       |
|-----------------------------------|---------------------------------------|
| <b>SIMTRUM</b><br>www.simtrum.com |                                       |
| Title:                            | BK7 Reflective Neutral Density Filter |
| Material:                         | BK7                                   |
| Part No:                          | BK7-RNDF-50-2                         |