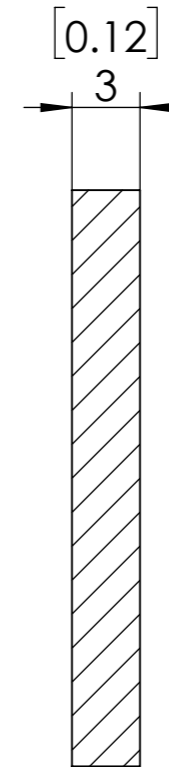
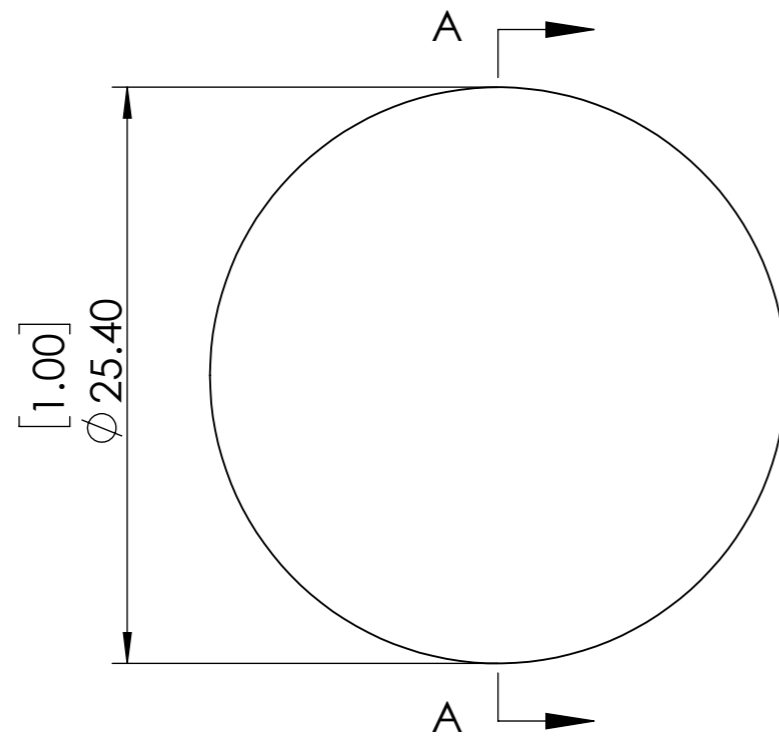
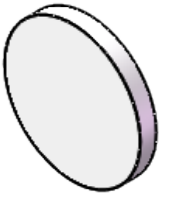


**FOR INFORMATION ONLY NOT FOR
MANUFACTURING PURPOSES**



SECTION A-A

1. CLEAR APERTURE: >90%
2. SURFACE FLATNESS: $< \lambda/4 @ 633\text{nm}$
3. SURFACE QUALITY: 40-20
4. AOI: 45 degree
5. SPLIT RATIO: 50:50 \pm 5%
6. PARALLELISM: $< 3 \text{ arcmin}$
7. DIAMETER TOLERANCE: +0/-0.2 mm
8. COATING: R<0.5% @ 532nm

SIMTRUM www.simtrum.com	
Title:	BK7 Laser Line Non-Polarizing Beamsplitter Plate
Material:	BK7
Part No:	BK7-LNPBSP-25.4-532