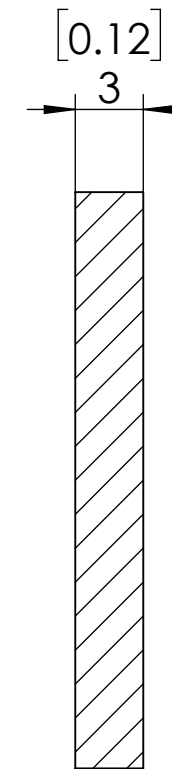
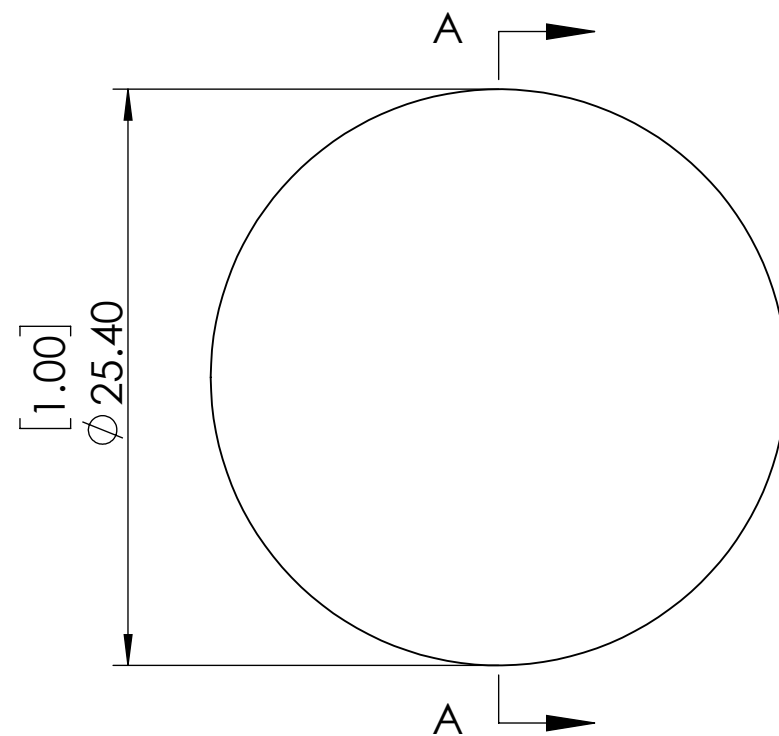
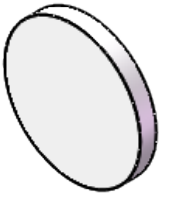


**FOR INFORMATION ONLY NOT FOR
MANUFACTURING PURPOSES**



SECTION A-A

- 1.CLEAR APERTURE: >90%
- 2.SURFACE FLATNESS: < $\lambda/4$ @633nm
- 3.SURFACE QUALITY: 40-20
- 4.AOI:45 degree
- 5.SPLIT RATIO:50:50±5%
- 6.PARALLELISM: <3 arcmin
- 7.DIAMETER TOLERANCE: +0/-0.2 mm
- 8.COATING:R<0.5% @ 633nm

SIMTRUM www.simtrum.com	
Title:	BK7 Laser Line Non-Polarizing Beamsplitter Plate
Material:	BK7
Part No:	BK7-LNPBSP-25.4-633