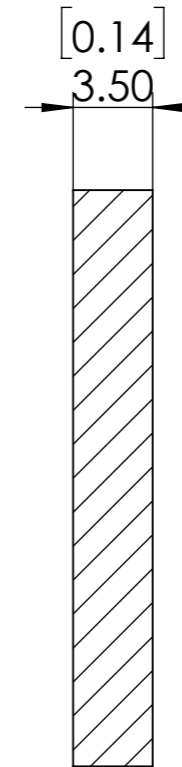
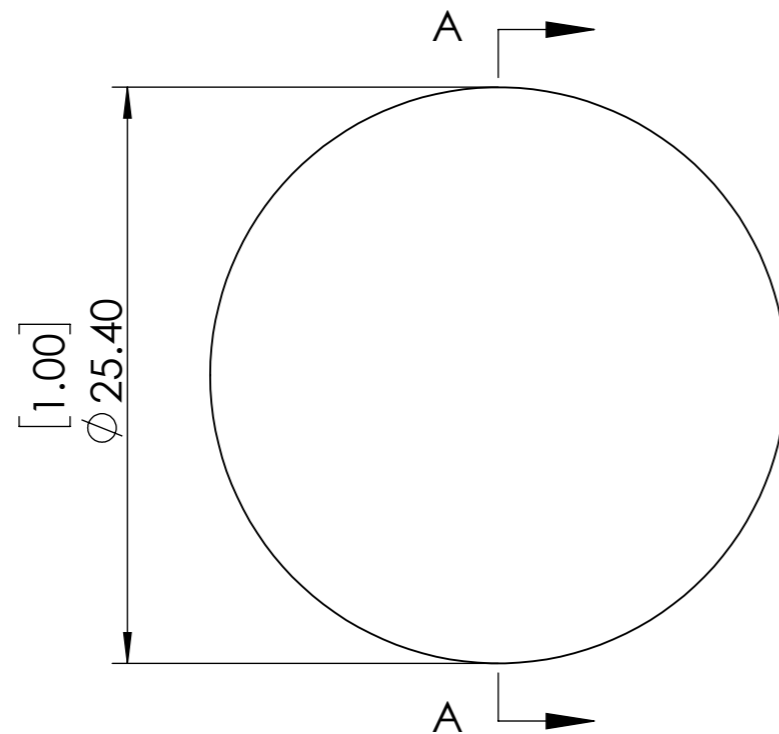
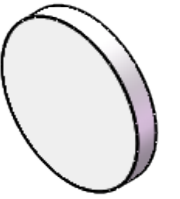


**FOR INFORMATION ONLY  
NOT FOR MANUFACTURING  
PURPOSES**



SECTION A-A

- 1.CLEAR APERTURE: <90%
- 2.SURFACE FLATNESS:  $2.5\lambda@633\text{nm}$
- 3.SURFACE QUALITY: 40/20
- 4.PARALLELISM:<3 arcmin
- 5.AOI:45 degree
- 6.TRANSMISSION:  $T>90\%@565-800\text{nm}$
- 7.REFLECTANCE:  $R>98\%@380-535\text{nm}$
- 8.CUT-ON WAVELENGTH: 550 nm
- 9.DIAMETER TOLERANCE: +0/-0.2 mm
- 10.THICKNESS TOLERANCE: $\pm 0.2$  mm

<b>SIMTRUM</b> www.simtrum.com	
Title:	Dichroic Beamsplitter Plate-Long Pass
Material:	BK7
Part No:	BK7-LPDBSP-25.4-550