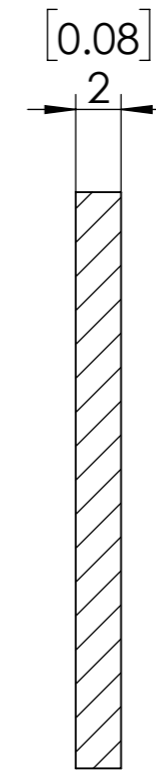
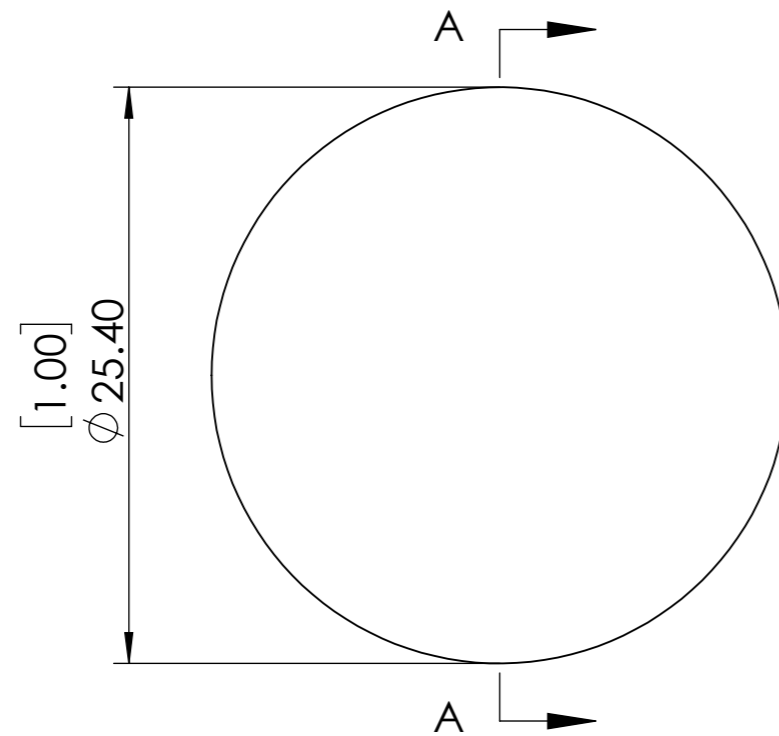
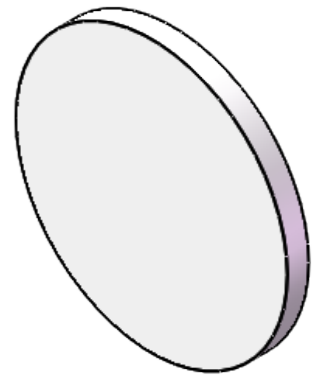


**FOR INFORMATION ONLY
NOT FOR MANUFACTURING PURPOSES**



SECTION A-A



1. DESIGN WAVELENGTH: 830 nm
2. RETARDATION: $\lambda/2$
3. RETARDATION TOLERANCE: $\lambda/100$
4. CLEAR APERTURE: $>90\%$
5. SURFACE QUALITY: 60-40
6. PARALLELISM: <3 arcmin

SIMTRUM www.simtrum.com	
Title:	Quartz Multi-Order Half Waveplate
Material:	Crystalline Quartz
Part No:	MHWP-25.4-830